

# Rosemount 2110

## Compact Vibrating Fork Liquid Level Switch



DIBt

- Virtually unaffected by turbulence, foam, vibration, coating, or changing liquid properties
- Built in diagnostics continuously monitors instrument health and Heartbeat LED provides visual indication
- Magnetic test point makes testing of the Rosemount 2110 and system easy
- Minimal installation and maintenance, and no calibration required, keeps costs down
- DIBt / WHG overfill protection certification keeps peace of mind
- Compact size makes the Rosemount 2110 suitable for use in small vessels and tanks or for in-pipe mounting.

# Overview of the Rosemount 2110



Threaded process connection

Tri-Clamp process connection



Compact and lightweight

## Measurement principle

The Rosemount 2110 is designed using the principle of a tuning fork. A piezo-electric crystal oscillates the forks at their natural frequency. Changes to this frequency are continuously monitored. The frequency of the vibrating fork sensor changes depending on the medium in which it is immersed. The denser the liquid, the lower the frequency.

When used as a low level alarm, the liquid in the tank or pipe drains down past the fork, causing a change of natural frequency that is detected by the electronics and switches the output state.

When the 2110 is used as a high level alarm, the liquid rises in the tank or pipe, making contact with the fork which then causes the output state to switch.

## Key features and benefits

- Stainless steel housing and plug/socket connection for fast-fit, high-volume users
- Compact and lightweight design for side or top mounting
- The industry standard DIN 43650 plug/socket is used for a fast connection. The polarity insensitivity and short circuit protection make electrical hook-up safe and easy
- The 2110 is designed for operation in temperatures from  $-40$  to  $302$  °F ( $-40$  to  $150$  °C)
- 'Fast Drip' fork design gives quicker response time, especially with viscous liquids
- Rapid wet-to-dry time for highly responsive switching
- Hygienic connections available. The fork shape is optimized for hand polishing to meet hygienic requirements.
- No moving parts or crevices for virtually no maintenance
- Magnetic test point makes functional test easy

## Contents

Overview of the Rosemount 2110 .....	page 2
Rosemount 2110 Level Switch Ordering .....	page 4
Rosemount 2110 Spare Parts and Accessories ...	page 5

Specifications .....	page 6
Product Certifications .....	page 8
Dimensional Drawing .....	page 9

## Fit and forget

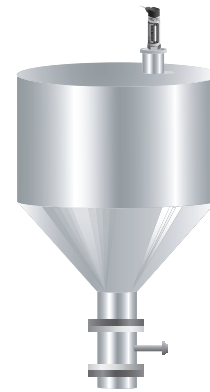
- Once installed, the 2110 is ready to go.  
It needs no calibration and requires minimum installation
- Functional testing of the instrument and system is easy with a magnetic test point
- You can install, and forget it

## Superior performance

- Functionality is virtually unaffected by turbulence, foam, vibration, coating, or liquid properties
- The 'Fast Drip' design allows the liquid to be quickly drawn away from the fork tip, making the 2110 quicker and more responsive in high density or viscous liquid applications

## Applications

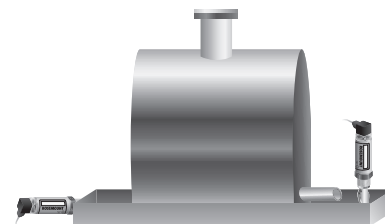
- Overfill protection
- High and low level alarms
- Leak detection
- Run dry or pump protection
- Pump control or limit detection
- Hygienic applications



Overfill Protection



High and Low Level Alarm



Leak Detection



Pump Protection

## Rosemount 2110 Level Switch Ordering

Specification and selection of product materials, options, or components must be made by the purchaser of the equipment. See [page 6](#) for more information on Material Selection.

**Table 1. Rosemount 2110 ordering information**

★The Standard offering represents the most common options. The starred options (★) should be selected for best delivery.

The Expanded offering is subject to additional delivery lead time.

Model	Product Description	
2110	Compact Vibrating Fork Liquid Level Switch	
<b>Electronic Type</b>		
<b>Standard</b>		<b>Standard</b>
0	Direct load switching with plug connection (2 wire) 21 to 264 Vac 50/60Hz, 21 to 264 Vdc	★
1	PNP/PLC low voltage switching with plug connection 18 to 60 Vdc	★
<b>Process Connection Size / Type</b>		
<b>Standard</b>		<b>Standard</b>
0A	<sup>3</sup> / <sub>4</sub> -in. BSPT (R) thread	★
1A	1-in. BSPT (R) thread	★
0D	<sup>3</sup> / <sub>4</sub> -in. NPT thread	★
2R <sup>(1)</sup>	2-in. (51 mm) Tri-clamp	★
1B	1-in. BSPP (G) thread	★
1L	1-in. BSPP (G) Semi-extended 4.6 in. (116 mm)	★
<b>Product Certificates</b>		
<b>Standard</b>		<b>Standard</b>
NA	No hazardous locations certifications (safe area use only)	★
GM <sup>(2)</sup>	Technical Regulation Customs Union (EAC), Ordinary Locations Mark	★
GP <sup>(2)</sup>	Korea Testing Laboratory (KTL), KCC mark for Ordinary Locations	★
<b>OPTIONS</b>		
<b>Calibration Data Certificate</b>		
<b>Standard</b>		<b>Standard</b>
Q4	Certificate of functional test	★
<b>Tag Plate</b>		
<b>Standard</b>		<b>Standard</b>
ST	Tag plate SST engraved plate (maximum 16 digits), wire-on	★
<b>Overfill</b>		
<b>Standard</b>		<b>Standard</b>
U1	DIBt/WHG Overfill protection	★
<b>Typical Model Number: 2110 0 2R NA</b>		

(1) Hand-polished for hygienic connections to better than 0.8 μm Ra such that there are no pits, folds, crevices or cracks discernible to the naked eye (i.e. no features larger than 75 micrometres based on resolving 1/60 degree at a distance of 250 mm).

(2) Contact an Emerson Process Management representative for additional information.

## Rosemount 2110 Spare Parts and Accessories

Specification and selection of product materials, options, or components must be made by the purchaser of the equipment. See [page 6](#) for more information on Material Selection.

**Table 2. Rosemount 2110 spare parts and accessories**

★The Standard offering represents the most common options. The starred options (★) should be selected for best delivery. The Expanded offering is subject to additional delivery lead time.

Spares and Accessories		
Standard		Standard
02100-1000-0001	Seal for 1-in. BSPP (G1A). Material: Non-asbestos BS7531 grade X carbon fiber with rubber binder	★
02100-1010-0001	Hygienic adaptor boss for 1-in. BSPP model. Material: 316 SST fitting. Fluorocarbon (FPM/FKM) O-ring	★
02100-1020-0001	Hygienic mounting kit for 2-in. (51 mm) Tri-clamp model. Includes vessel fitting, clamp ring, and seal. Material: 316 SST and NBR Nitrile	★
02100-1030-0001	Telescopic test magnet	★

# Specifications

## General

### Product

- Rosemount 2110 Compact Vibrating Fork Liquid Level Switch

### Measuring principle

- Vibrating fork

### Applications

- Most liquids including coating liquids, aerated liquids, and slurries

## Mechanical

### Mounting connections

- 3/4-in. BSPT (R) or NPT
- 1-in. BSPT (R) or BSPP (G) thread, or
- Hygienic 2-in. (51 mm) Tri-clamp fitting

### Materials selection

Emerson provides a variety of Rosemount product with various product options and configurations including materials of construction that can be expected to perform well in a wide range of applications. The Rosemount product information presented is intended as a guide for the purchaser to make an appropriate selection for the application. It is the purchaser's sole responsibility to make a careful analysis of all process parameters (such as all chemical components, temperature, pressure, flow rate, abrasives, contaminants, etc.), when specifying product, materials, options and components for the particular application. Emerson Process Management is not in a position to evaluate or guarantee the compatibility of the process fluid or other process parameters with the product, options, configuration or materials of construction selected.

### Process connection materials

- 316L Stainless Steel (1.4404)
- For Tri-Clamp connection, hand polished to better than 0.8  $\mu\text{m}$  upon request
- Gasket material for 1 in. BSPP (G1) is Non-asbestos BS7531 Grade X carbon fiber with rubber binder.

### Housing / enclosure materials

- Body: 304 SST with polyester label
- LED window: Flame retardant Polyamide (Pa12) UL94 V2
- Plug: Polyamide glass reinforced
- Plug seals: Nitrile butadiene rubber

### Dimensional drawings

- See "Dimensional Drawing" on page 9

### Ingress protection rating

- IP66/67 to EN60529

## Performance

### Hysteresis (water)

- $\pm 0.039$ -in. ( $\pm 1$  mm) nominal

### Switching point (water)

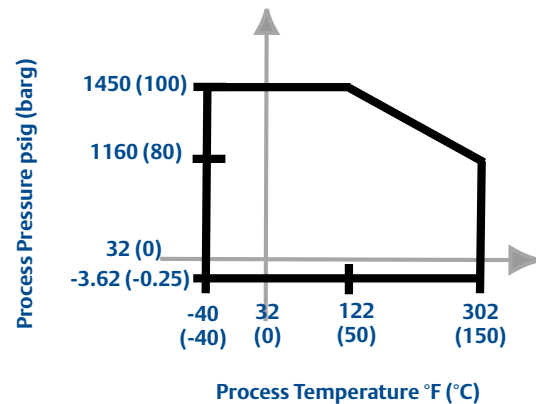
- 0.5 in. (13 mm) from fork tip if mounted vertically
- 0.5 in. (13 mm) from the fork edge if mounted horizontally
- The switching point varies with different liquid densities

## Functional

### Maximum operating pressure

- The final rating depends on the process connection
- Threaded connection: see [Figure 1](#)
- Hygienic connection: 435 psig (30 barg)

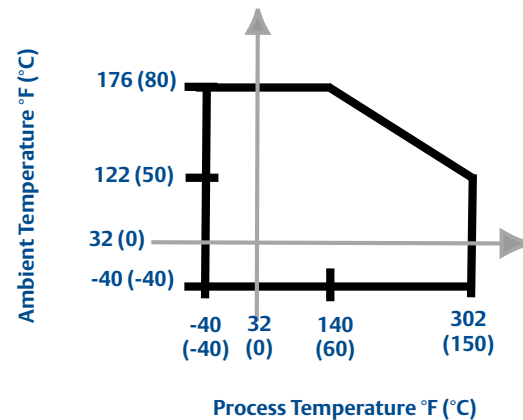
Figure 1. Process pressure



### Minimum and maximum operating temperatures

- See [Figure 2](#) for the maximum and minimum operating temperatures

Figure 2. Temperature



**Liquid density requirement**

- Minimum 37.5 lb/ft<sup>3</sup> (600 kg/m<sup>3</sup>)

**Liquid Viscosity Range**

- 0.2 to 10000 cP (centiPoise)

**Solids content and coating**

- Maximum recommended diameter of solid particles in the liquid is 0.2 in. (5 mm)
- For coating product, avoid ‘bridging’ of forks

**Switching delay**

- 1 second delay for dry-to-wet or wet-to-dry switching

**CIP (Clean In Place) cleaning**

- Withstands steam cleaning routines up to 302 °F (150 °C)

**Electrical**

**Switching mode**

- User selectable (Dry=on or Wet=on) by selecting plug wiring

**Protection**

- Polarity insensitive – *Direct Load electronics only*
- Over-current protection
- Short-circuit protection
- Load-missing protection
- Surge protection (to IEC61326)

**Magnetic test point**

- A magnetic test point is located on the side of the housing, allowing a functional test of the 2120 and a system connected to it. By holding a magnet to the target, the 2120 output changes state for as long as the magnet is held there

**Cable connection**

- Via 4-way plug provided (DIN43650)
- Maximum conductor size is 15AWG
- 4-position orientation (90° / 180° / 270° / 360°)

**Terminal connection (wire diameter)**

- Maximum 0.06 in.<sup>2</sup> (1.5 mm<sup>2</sup>)

**Cable gland**

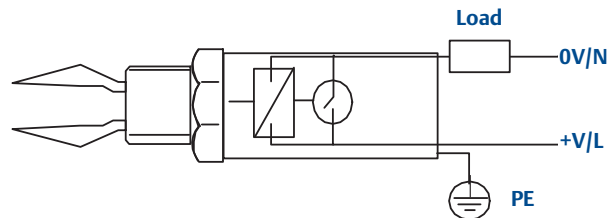
- PG9 provided. Cable diameter 0.24 to 0.31 in. (6 to 8 mm)

**Grounding**

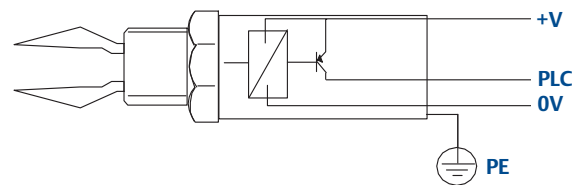
- The 2110 should always be grounded either through the terminals or using the external ground connection provided

**Electronics options**

Direct Load Switching (Electronics Type Code 0)	
Operating voltage	21 to 264 Vac (50 to 60 Hz)/dc
Maximum switched load	500 mA
Maximum peak load	5 A for 40 ms maximum
Minimum switched load	20 mA continuous
Voltage drop	6.5 V @ 24 Vdc / 5 V @ 240 Vac
Current draw (load off)	< 3.0 mA continuous



PNP Switching (Electronics Type Code 1)	
Operating voltage	18 to 60 Vdc
Maximum switched load	500 mA
Maximum peak load	5 A for 40 ms max.
Voltage drop	< 3 V
Supply current	3 mA nominal
Output current (load off)	< 0.5 mA



# Product Certifications

## European directive information

The EC declaration of conformity for all applicable European directives for this product can be found on the Rosemount website at [www.rosemount.com](http://www.rosemount.com).

### Low voltage directive

EN61010-1 Pollution degree 2, Category II (264V max),  
Pollution degree 2, Category III (150 V maximum)

### Electro Magnetic Compatibility (EMC) Directive

EN61326

## Overfill protection

If required, select Product Certificates code U1 for DIBt/WHG overfill protection. The approval number is Z-65.11-236.

## Canadian Registration Number (CRN)

The CRN is 0F04227.2C for model numbers with a NPT threaded process connection selected.

## Technical Regulation Customs Union (EAC), ordinary locations mark

**GM** Contact an Emerson Process Management representative for additional information.

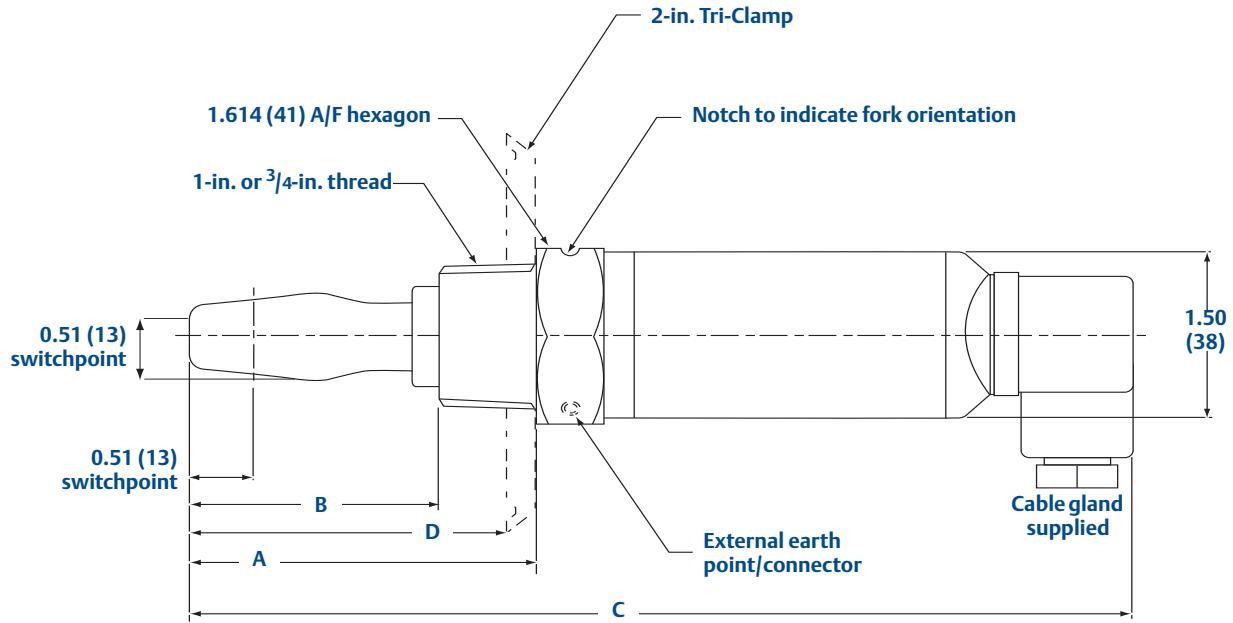
## Korean Testing Laboratory (KTL), KCC mark for ordinary locations use

**GP** Certificate: KCC-REM-ERN-RMDSWIT2110XXX



# Dimensional Drawing

Note: Dimensions are in inches (millimeters).



Process Connections	A	B	C	D
<sup>3</sup> / <sub>4</sub> -in. BSPT (R)	2.72 (69)	1.97 (50)	7.40 (188)	N/A
<sup>3</sup> / <sub>4</sub> -in. NPT	2.72 (69)	1.97 (50)	7.40 (188)	N/A
1-in. BSPT (R)	2.72 (69)	1.97 (50)	7.40 (188)	N/A
1-in. BSPP (G)	3.07 (78)	2.36 (60)	7.91 (201)	N/A
2-in. (51 mm) Tri-Clamp	2.72 (69)	1.97 (50)	7.40 (188)	2.52 (64)
1-in. Semi-extended	4.57 (116)	3.86 (98)	9.41 (239)	N/A

**Emerson Process Management  
Rosemount Inc.**  
8200 Market Boulevard  
Chanhassen, MN 55317 USA  
T (USA) 1 800 999 9307  
T (International) +1 952 906 8888  
F +1 952 906 8889  
[www.rosemount.com](http://www.rosemount.com)

**Emerson FZE**  
P.O. Box 17033  
Jebel Ali Free Zone  
Dubai UAE  
T +971 4 811 8100  
F +971 4 886 5465  
[www.rosemount.com](http://www.rosemount.com)

**Emerson Process Management  
Latin America**  
1300 Concord Terrace, Suite 400  
Sunrise Florida 33323 USA  
T + 1 954 846 5030  
[www.rosemount.com](http://www.rosemount.com)

**Emerson Process Management**  
Neuhofstrasse 19a  
CH 6341 Baar  
Switzerland  
T +41 (0) 41 768 61 11  
F +41 (0) 41 76 1 87 40  
[www.rosemount.com](http://www.rosemount.com)

**Emerson Process Management**  
Asia Pacific Pte Ltd  
1 Pandan Crescent  
Singapore 128461  
T +65 6777 8211  
F +65 6777 0947  
Service Support Hotline: +65 6770 8711  
Email: [Enquiries@AP.EmersonProcess.com](mailto:Enquiries@AP.EmersonProcess.com)  
[www.rosemount.com](http://www.rosemount.com)

**Emerson Beijing Instrument Co**  
No. 6 North Street, Hepingli  
Dongcheng District, Beijing  
100013  
China  
T +8610 6428 2233  
F +8610 64287640  
[www.rosemount.com](http://www.rosemount.com)

Standard Terms and Conditions of Sale can be found at [www.rosemount.com/terms\\_of\\_sale](http://www.rosemount.com/terms_of_sale)  
The Emerson logo is a trade mark and service mark of Emerson Electric Co.  
Rosemount and the Rosemount logotype are registered trademarks of Rosemount Inc.  
All other marks are the property of their respective owners.  
© 2014 Rosemount Inc. All rights reserved.