



## Diaphragm Seal Assemblies



232.50/232.30  
233.50/233.30



IS-3



2088 / 2051 / 3051S



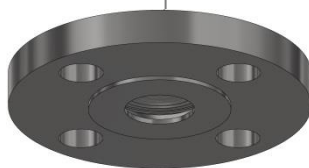
Direct  
Mount

990.22



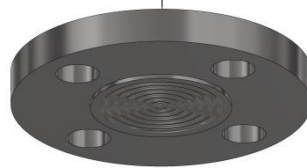
3 Fin  
Cooling Tower

990.26



5 Fin  
Cooling Tower

990.27



Tufflex  
Capillary

990.34



**Designed, assembled, tested, filled  
calibrated & despatched within 5 days!**

Phone: 0161 707 4838 Email: sales@bkwinstruments.co.uk





## Diaphragm Seal Assemblies



### PRESSURE GAUGES & TRANSMITTERS

Model:	232.50 / 233.50	232.30 / 233.30	IS-3	2088	2051	3051S
<b>Description:</b>	Stainless Steel 100mm (4") Industrial	Stainless Steel 100mm (4") Safety Pattern ATEX	Stainless Steel Field Housing Hazardous Area ATEX / IECEx Intrinsically Safe	Aluminium Housing In-line ATEX Flameproof Intrinsically Safe Type n, Dust	Aluminium Housing LCD Indicator ATEX Flameproof Intrinsically Safe Type n, Dust	Aluminium Housing LCD Indicator ATEX Flameproof Intrinsically Safe Type n, Dust
<b>Output:</b>	N/A	N/A	4 ... 20 mA	4 ... 20 mA HART	4 ... 20 mA HART	4 ... 20 mA HART
<b>Input:</b>	N/A	N/A	2 wire	2 wire	2 wire	2 wire
<b>Rating:</b>	N/A	N/A	IP69K	IP66/68	IP66/68	IP66/68
<b>Thread/Conn:</b>	G 1/2 B	G 1/2 B	G 1/2 B	G 1/2 B	G 1/2 B	G 1/2 B
<b>Ranges:</b>	Fixed bar / psi -1 / 0 0 - 1 0 - 2.5 0 - 4 0 - 6 0 - 10 0 - 16 0 - 25 0 - 40	Fixed bar / psi -1 / 0 0 - 1 0 - 2.5 0 - 4 0 - 6 0 - 10 0 - 16 0 - 25 0 - 40 0 - 60 0 - 100 0 - 160 0 - 250 0 - 400 0 - 600	Fixed Gauge -1 / 0 barg 0 - 2.5 barg 0 - 4 barg 0 - 10 barg 0 - 16 barg 0 - 40 barg	Scalable Gauge 0 - 2.1 barg 0 - 10 barg 0 - 55 barg	Scalable Gauge 0 - 10 barg 0 - 55 barg 0 - 276 barg	Scalable Gauge 0 - 10 barg 0 - 55 barg 0 - 276 barg

### MOUNTING

Model:	Direct Mount	3 FIN	5 FIN	Tufflex Capillary
<b>Description:</b>	1/2" BSP	Cooling Tower	Cooling Tower	Lengths 1, 2, 3, 4, 6, 10m

### DIAPHRAGM SEALS

Model:	990.22	990.26					
<b>Description:</b>	Tri-clamp	Recessed Flange					
<b>Material:</b>	316 Stainless Steel	316 Stainless Steel			Hastelloy	Tantalum	
<b>Process Connection:</b>	1 1/2"   2"	1/2" 150lb	1/2" 300lb	1" 150lb	1" 300lb	1" 150lb	1" 300lb
Model:	990.34	990.27					
<b>Description:</b>	Threaded	Flush Flanged					
<b>Material:</b>	316 Stainless Steel	316 Stainless Steel			Hastelloy	Tantalum	
<b>Process Connection:</b>	1/2" BSP	1 1/2" 150lb	1 1/2" 300lb	2" 150lb	2" 300lb	3" 150lb	3" 150lb

### FILL FLUIDS

Description:	KN2 Silicone	KN32 Silicone	KN92 Hygienic	KN21 Inert	KN99 Hygienic	KN17 Silicone
<b>Max. Pressurised Temp:</b>	200°C.	400°C.	260°C.	175°C.	220°C.	180°C.
<b>Max. Vacuum Temp:</b>	100°C.	200°C.	160°C.	80°C.	110°C.	80°C.

### CERTIFICATION

<b>Description:</b>	Certificate of Conformity	Calibration Certificate	3.1 Material Certificate	Hazardous Area Certificate
---------------------	---------------------------	-------------------------	--------------------------	----------------------------



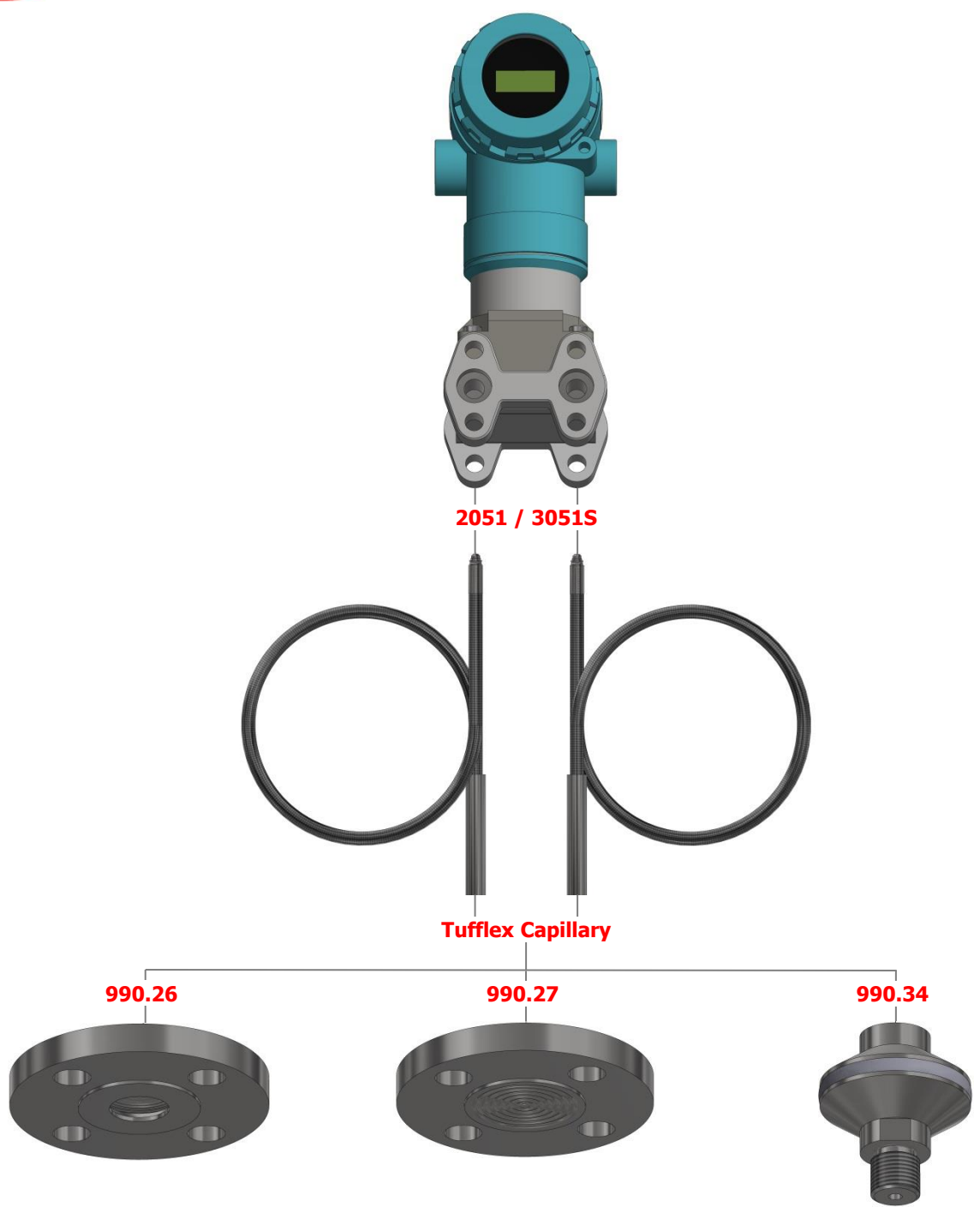
**Designed, assembled, tested, filled  
calibrated & despatched within 5 days!**

Phone: 0161 707 4838 Email: sales@bkwinstruments.co.uk



Despatched within  
**5**  
days

## Diaphragm Seal Differential Pressure Assemblies



**Designed, assembled, tested, filled  
calibrated & despatched within 5 days!**

Phone: 0161 707 4838 Email: sales@bkwinstruments.co.uk





## Diaphragm Seal Differential Pressure Assemblies



### PRESSURE TRANSMITTERS

Model:	2051	3051S
<b>Description:</b>	Aluminium Housing LCD Indicator ATEX Flameproof Intrinsically Safe Type n, Dust	Aluminium Housing LCD Indicator ATEX Flameproof Intrinsically Safe Type n, Dust
<b>Output:</b>	4 ... 20 mA HART	4 ... 20 mA HART
<b>Input:</b>	2 wire	2 wire
<b>Rating:</b>	IP66/68	IP66/68
<b>Thread/Conn:</b>	1/4"NPT F	1/4"NPT F
<b>Ranges:</b>	Scalable Differential 0 – 25 "H <sub>2</sub> O 0 – 250 "H <sub>2</sub> O 0 – 1,000 "H <sub>2</sub> O 0 – 300 psi	Scalable Differential 0 – 25 "H <sub>2</sub> O 0 – 250 "H <sub>2</sub> O 0 – 1,000 "H <sub>2</sub> O 0 – 300 psi

### MOUNTING

Model:	Tufflex Capillary
<b>Description:</b>	Available in lengths (m) 1 2 3 4 6 10

### DIAPHRAGM SEALS

Model:	990.26						990.34	
<b>Description:</b>	Recessed Flange						Threaded	
<b>Material:</b>	316 Stainless Steel				Hastelloy	Tantalum		
<b>Process Connection:</b>	1/2" 150lb	1/2" 300lb	1" 150lb	1" 300lb	1" 150lb	1" 150lb	1" 300lb	
Model:	990.27						990.34	
<b>Description:</b>	Flush Flanged						Threaded	
<b>Material:</b>	316 Stainless Steel				Hastelloy	Tantalum	316 Stainless Steel	
<b>Process Connection:</b>	1 1/2" 150lb	1 1/2" 300lb	2" 150lb	2" 300lb	3" 150lb	3" 300lb	3" 150lb	1/2" BSP

### FILL FLUIDS

Description:	KN2 Silicone	KN32 Silicone	KN92 Hygienic	KN21 Inert	KN99 Hygienic	KN17 Silicone
<b>Max. Pressurised Temp:</b>	200°C.	400°C.	260°C.	175°C.	220°C.	180°C.
<b>Max. Vacuum Temp:</b>	100°C.	200°C.	160°C.	80°C.	110°C.	80°C.

### CERTIFICATION

<b>Description:</b>	Certificate of Conformity	Calibration Certificate	3.1 Material Certificate	Hazardous Area Certificate
---------------------	---------------------------	-------------------------	--------------------------	----------------------------



*Designed, assembled, tested, filled  
calibrated & despatched within 5 days!*

Phone: 0161 707 4838 Email: sales@bkwinstruments.co.uk

