

Installation Instructions

GENERAL INSTRUCTIONS FOR THE INSTALLATION OF CHEMICAL SEAL ASSEMBLIES



DO NOT

Touch the diaphragm if at all possible.

Let the diaphragm come into contact with any sharp objects.



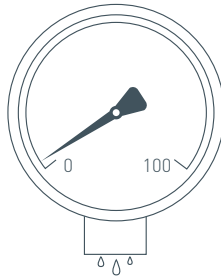
DO NOT

Place exposed diaphragms directly onto the floor or worktops.



GENERAL INSTRUCTIONS FOR THE INSTALLATION OF CHEMICAL SEAL ASSEMBLIES (CONTINUED)

WARNING



WARNING
DO NOT separate a
Chemical Seal System



1. If separated the instrument will fail and will need to be returned to BKW for re-assembly, re-filling and re-calibrating.
2. No attempts should be made to remove a pressurised seal instrument – the pressure system must be totally relieved or isolated.
3. Goods returned to BKW must have a COSHH Cleanliness Certificate, where appropriate, to show that the goods have been properly decontaminated.